



Participant Information Sheet

The Mental Health Tribunal for Scotland: The Views and Experiences of Patients, Named Persons, Practitioners and Tribunal Members



Invitation



You are being invited to take part in a research study.

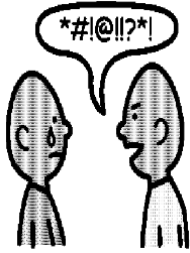


Please take time to read the following information carefully.



Please ask if there is anything that is not clear.

Then decide if you want to take part.



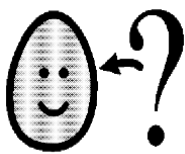
What we want to find out

We want to find out how the mental health tribunal for Scotland is working.

We want to know if it is working as it should be.

We are interested in what could be done to make things work better.

We want to know what impact the tribunal has on your human rights.



What is involved?

If you decide to take part we will talk to you through a video call up to 3 times.

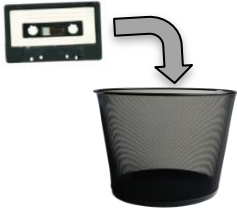
We will ask you some questions about your experience of the tribunal.

We will ask you some questions about if you spoke at the tribunal and if you were listened to.

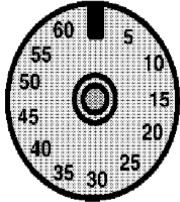
We will ask you what you think would make things better.



The talk will be taped.



It will be destroyed after the project ends.

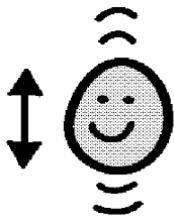


How long will it take?

Each time we video call we will speak for around 20 minutes.



You can have a break at any time.



Do I have to take part?

YOU decide. It is voluntary.



If you say **YES**, you will be asked to sign a **CONSENT** form or agreement.



You can say change your mind or say **NO** to the

study at **ANY TIME**.



This **WILL NOT** have any impact on your care.



What will happen to the information you collect about me?

All information about you will be confidential or secret.



No personal or private information is used in the write up of the study.



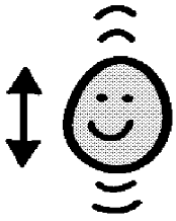
All information is stored on a password-protected computer.

The information will be saved in a way that no one can tell who you are.

This information will be viewed by Professor Jill Stavert, Professor Michael Brown, and Ms Aimee McDonald.



The interview recordings will be destroyed once we have saved these onto a secure computer.



You can decide if you want to bring someone along with you.



Concerns or Questions?

You can ask any questions about the study:



Lead researcher: Professor Jill Stavert

Tel. 0131 455 4553

Email: J.stavert@napier.ac.uk

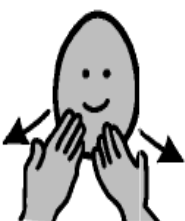


Who else can I contact?

Professor Austyn Snowden

Tel: 0141 455 2965

Email: A.snowden@napier.ac.uk



Thank you for reading this information